



CONNECT

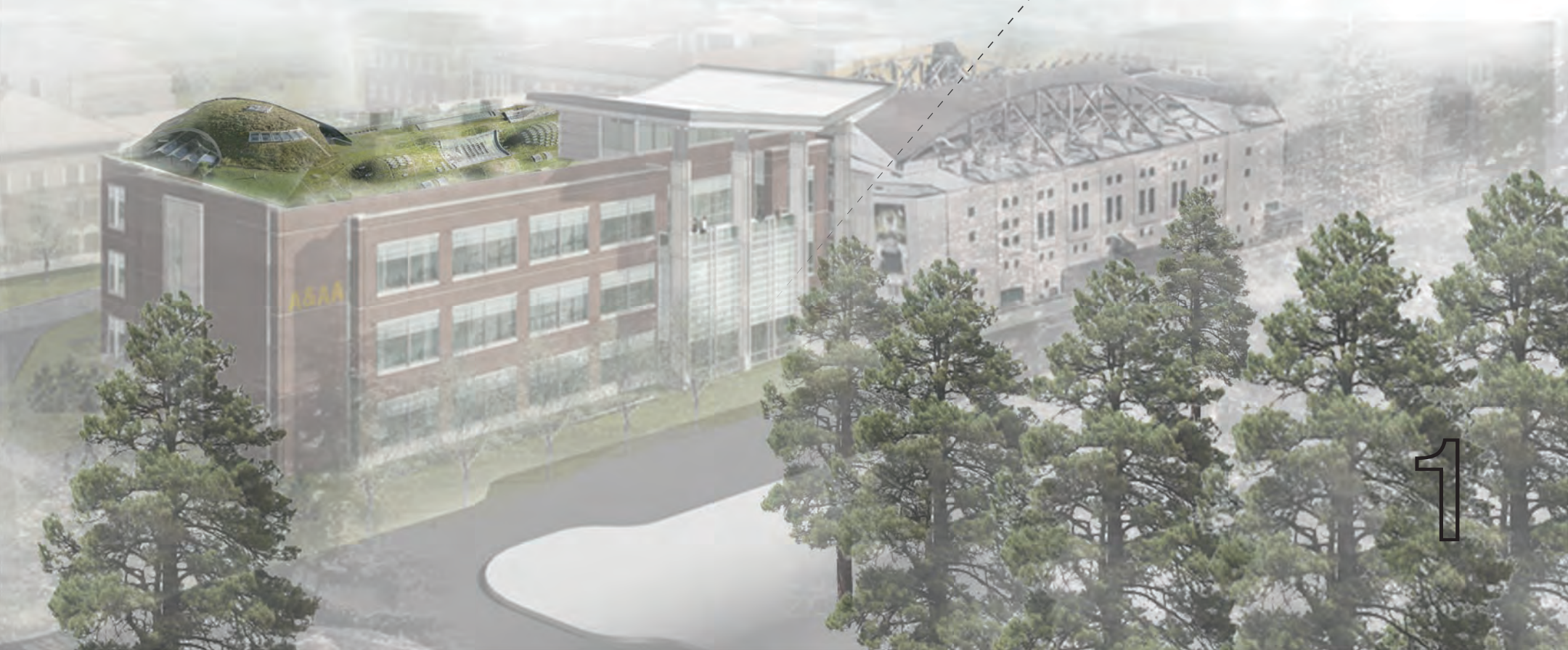
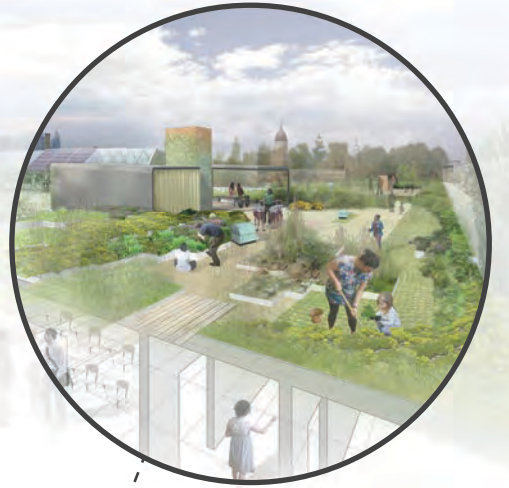
Connecting the Community
Connecting the Students
Connecting the Environment

Connections in academia spawn creativity, open new doors, and create relationships that further the academic experience for students and teachers alike. The question universities should seek to answer is, "How do they create these connections?"

Education thrives when students are **engaged** in their work, **invested** in their education, and **connected** to their peers and teachers. The mission and values of A&AA attempt to encompass these three features. A&AA is dedicated to providing a high quality education and environment for students; encouraging a **multi-disciplinary approach** to learning enhanced by cooperation among departments; and recognizing its impact on environmental, social, and cultural systems.

The question we sought to answer was "have they been meeting these goals?" Interviews with over 25 students and teachers from each department of A&AA showed a high degree of satisfaction with their overall A&AA experience, but there is room for improvement. The primary area for improvement stated by each interviewee was based on the idea of collaboration. Collaboration in the form of mixed classes; shared studio spaces; open studios and labs; open study areas; and public space for displaying the **talent of A&AA**.

Our vision for the new A&AA building expands on the idea of collaboration among students and departments, to create a **true community**, to enhance those connections the university seeks, while continuing with the mission to provide a high quality learning experience and recognizing the systems impacted. Interview responses influenced our design concepts. We envision a **transformative learning experience** that expands the **evolution of learning**.



Connecting the Community

A&AA is a large, academic community. However, the current physical setup makes this community feel disconnected: long, narrow hallways section off departments and studios; studios located in buildings far from Lawrence; entire departments located in other buildings. Interview responses showed a dissatisfaction with the current layout and connectivity of A&AA.

To reestablish the connection of the A&AA community, we designed an atrium concept to **eliminate** these **disconnections** by bringing the departments under one roof. Mixed studio and lab levels opening to the center of the atrium enhance the community feel and connectivity between the departments. Departments are located in large corridors, eliminating the narrow, secluded feeling currently observed. A central hearth serves as the heart of the atrium and an open gallery showcases the **scholarly, scientific, and creative adventures** of the A&AA department.

Our vision is for an interactive, engaging space that draws in people from the campus and public community. This building would represent the academic focal entry to south campus that showcases A&AA's and the University's mission and commitment to sustainability and academic success. Spaces will **foster curiosity and participation** in A&AA disciplines allowing for a transformative learning experience. Connections within and beyond the community are essential as it will increase the **social capital** of each and every student, providing them with the tools they need to succeed.

Writable Walls and Windows

- Open sharing of ideas
- Expansion of informal learning zones
- Spontaneous expression
- Located throughout the building, including lab and studio spaces
- Increase collaboration potential

Student Gallery

- Highlights A&AA talent
- Where theory meets practice
- Display student work from all disciplines
- Physical and digital displays
- A&AA's "advertisement" to the community
- Fuels ideas and creativity throughout disciplines

Atrium

- Gateway to A&AA
- Open pin-up space for student, faculty, or community input on in-process work from any discipline
- Public workspaces
- Increased natural lighting and visual accessibility to greenery to increase well-being



WELCOMING

ENGAGEMENT

OPPORTUNITY



Connecting the Students

A challenge for universities is how can they connect students to one another? To their teachers? How do teachers connect? How do departments connect? To address these questions we focused on the concepts of **integration** and **transparency**, concepts we feel are imperative to the new A&AA space.

Integrate studio spaces so that art studios are not segregated from architecture studios, and interior architecture studios are next to product design studios. Glass walls would create transparency between studios and allow for the potential **sharing of ideas** and **inspiration** between students. Media labs would **facilitate interaction** between students, so that potentially a Masters student in Urban Planning could work side by side with a Bachelor of Architecture student.

Wide corridors throughout the building would house **conference pods**. Offices, studios, or classrooms would surround the pods allowing for **increased accessibility** and interaction. Informal learning spaces will also inhabit these corridors with nooks, window seats, and comfortable seating to increase interaction between students and teachers.

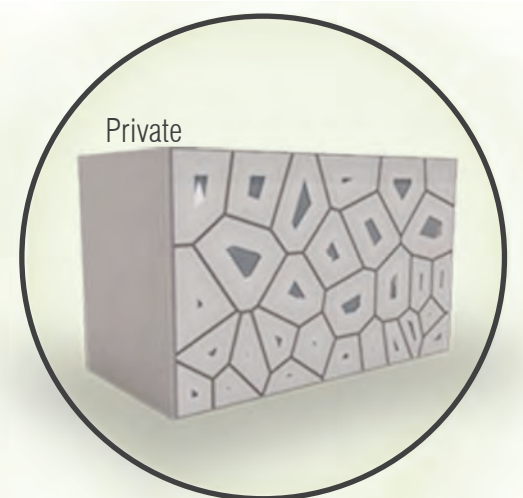
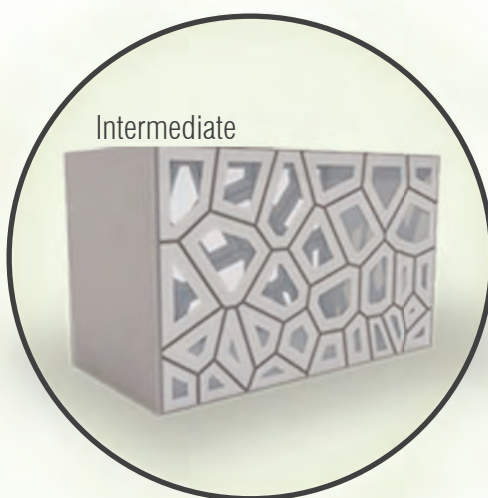
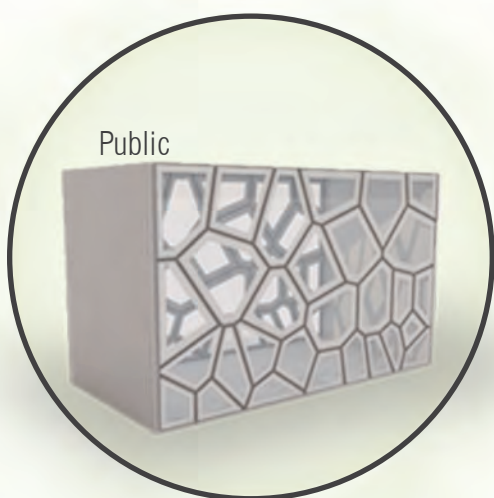
Through these spaces we have **increased interaction**, increased **creativity**, and increased **connections** which will provide the optimum teaching and learning experience for A&AA.

Dynamic Studios and Biowall

- Adjacent studio spaces from different departments
- Transparent studios lead to creativity and collaboration
- Biowall provides cleaner air, enhances building aesthetics, and reduces noise pollution

Study Nook

- Informal and intermediate learning space
- Place to create special moments and experiences
- Complementary to other informal learning spaces throughout the hallways



The conference pods provide an intermediate space that A&AA currently does not have. There is a desire and need for this intermediate space for a variety of activities across the A&AA disciplines. The versatility of these pods stems from the need to have adaptable spaces: public level of openness for invitation to collaborate, or minimal level for private meetings. Pods will contain writing surfaces, large tables, and multimedia technology.

INSPIRE

SYNERGIZE

INTEGRATE



Connecting the Environment

Connecting people to the environment is important for the health of students and faculty. To further that connection, we designed a green space on the roof that would **inspire collaboration, relaxation, and creative thinking**. It would also provide the university and A&AA a unique opportunity to showcase their **commitment to sustainability**, by expanding vertically and utilizing the roof as an academic tool and social space.

Outdoor Seating and Decks

- Spaces to rejuvenate in a natural, peaceful setting
- Social space to mix disciplines

Collaboration Pods

- Student and faculty collaboration space
- Writable boards and screens for multimedia uses
- Sliding walls eliminate the threshold between in and out

Wellness Lounge (most desired in the interview process)

- Hub for interaction and relaxation
- Resting place for long nights in studio
- Comfortable, varied seating areas
- Recreation opportunities
- Kitchenette
- Individual sleeping pods
- Outdoor balcony



SUSTAINABILITY

CREATIVITY

EPIC BRAINSTORMING

Green roof will provide a large, open space for students and faculty to engage the environment for their academic, creative, or relaxation needs.

Outdoor seating will provide quiet areas and vary from open to covered.

Landscaped with an emphasis on native Oregon plants and trees.

Planting workspace for landscape architecture students.

Atrium roof will provide natural light through the cavity of the building.

Solar panels line the tops of the collaboration pods and wellness lounge.

Rainwater harvesting systems allow for greywater use in the building and reduces runoff pollution.

